

THE SEA MONSTER

Spellbinding circus, dance and storytelling inspired by an old folk tale about healing, with a voiceover that can be delivered in Welsh, English or bilingually. A narrative story about a fisherman who finds a sea monster, the story takes place on a bespoke aerial rig and celebrates the challenges we must face to fully be alive, how untangling our deepest fears can often lead to the biggest rewards. Captivating for adults and children alike, minimum age 7+



Storyline

The story has a tragic start; A human pushed over and into the sea, decaying until all that is left is a jumbled jangly mess of bones, covered in seaweed and sea life. That is until a wandering fisherman hooks it out of the sea. Terrifyingly, this 'monster' follows him home trapped in his fishing lines. Yet, facing his fear and mustering compassion he untangle the monster before him. The reward is great, turning into his missing companion she drums love back into his heart.

Video Trailer

<https://vimeo.com/652833651>

"BEAUTIFUL PHYSICAL STORYTELLING"

More about the show

Researched and developed over 15 years this theatrical piece explores artistic concepts visually, methodologically and narratively. Integrating aerial, acrobatics and storytelling, the live performance explores themes of ensemble - how can everyone be truly equal as a performer? All three artists play both characters, have the highest point and interchange as base and flyer. It explores the concept of ensemble theatre as a synonym for equality, using the virtuosic skills as punctuation to the narrative, weaving circus into the physicality to extend the gestural semiotics of the story.

Why book this show?

- Highly skilled performers
- Engaging storytelling
- Impressive Circus Structure
- Covid safe
- Local, quality entertainment

Target Audiences

- Particularly suitable for children aged 7-15, adults and families
- Existing attendees of the arts living locally
- People looking for covid safe entertainment
- Young people interested in circus and dance
- Tourists

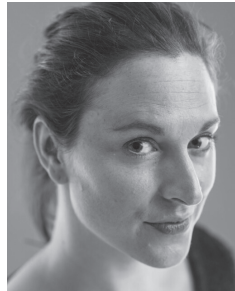
Key Specs

- Running time: 25 minutes
- 3 performers & 1 technician
- Show tours with own aerial rig (min 8 x 9 meter floor space required) or can be hosted in riggable spaces
- *The Sea Monster* is available for bookings from 2022 onwards for approximately £1600 for 2-3 shows a day

Company, Cast and Creatives

Le Physical is a Swansea-based circus and physical theatre company, founded and directed by Natalie Verhaegen. Our work is about the powerful way the highly physical skills of circus can be harnessed to explain concepts and tell stories, and how the extension of gesture into the highly physical can make empathic moments more powerful.

Natalie Verhaegen is a director performer and teacher working primarily within the circus world. Her work is about the powerful way that physical performance and the arts can be harnessed to explain concepts, make meaning analysis of our world and connect people to themselves and others on a deeper level.



Qualifications include: MA Directing Circus, A Post Graduate Certificate in Education and BA (Hons) Contemporary Arts.



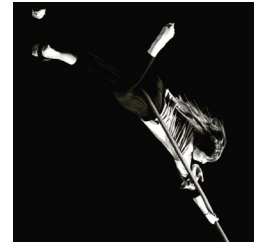
Lily Tiger (Welsh Language Artist)

Lily is an artist-filmmaker and creative facilitator from West Wales. She earned her BA in fine arts from Central Saint Martins. Her practice is multidisciplinary working across drawing, sculpture, installation and expanding traditional documentary formats as a medium for her research based enquiry. She is engaged with people's everyday stories, archives, and local environments. Her film work has been screened at film festivals in the UK and abroad.

"WONDERFULLY VISUAL WITH AN AMAZING SOUND SCORE"

Ellie Kate Edwards

Elle graduated from Circomedia's BA and MA course as a Leverhulme Arts Schooler. Elle performs rope, hula hoop and vertical dance. Her performance highlights have included; Perth International Arts festival in Bianco, Turning Savage with NoFit State circus. Elle also works as a freelance creative practitioner and director, she is co director of Syrcas Ty Adar and Splatsh Productions. In 2023 Elle Co Directed Daydream Supreme, an outdoor production which premiered at Greenman Festival.



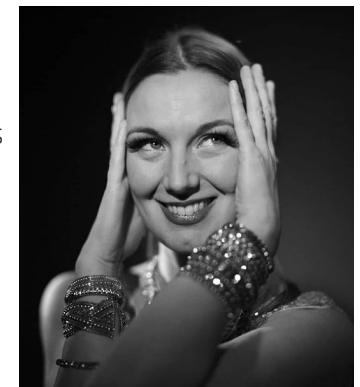
Gemma has been performing from a young age attending BRIT School of Performing Arts and Rose Bruford Drama School before attending Circus Space in London where she specialised in aerial hoop. After graduating she continued developing skills in aerial straps, handstands and silks as well as theatre and dance. She enjoys devising and working both in an ensemble and as a soloist. She can be normally be found either training at nofit state circus or being walked around Cardiff by her dog.

Martin Alvez

Originally a gymnast, competing on the Argentinian national team Martin followed this passion into circus, working worldwide for over 20 years with companies such as Cirque Du Soleil, before settling in Swansea. He has won the Silver prize at the Golden Circus Festival (2008) and the audience prize at the Artistika Festival (2018)



The music and soundtrack in *The Sea Monster* have been composed and created by **Aelfwyn Shipton**. As a classically trained violinist from The Royal Welsh College of Music and Drama, she has performed with renowned artists, such as Antonio Forcine. She composes, arranges and performs music across the globe. Working with world class circus artists creating recorded and live music for bespoke shows, she has previously won the judges choice at the Circus Maximus competition (2014).





Show Copy

47 words

'Wonderfully visual storytelling to make you consider what you are made of and where you come from.' Beautiful narration and impressive aerial and circus skills tell the dramatic tale of a monster's bones dragged up from the sea. Circus and storytelling delivered with a Welsh, English or bilingual soundtrack.

128 words

'Wonderfully visual storytelling to make you consider what you are made of and where you come from.' The Sea Monster is an old folk tale about healing and the cycles of life and death. Storytelling, aerial circus, acrobatics and dance tell the dramatic tale of a monster dragged up from the sea. Tangled in the line of a local seafarer, it chases him all the way home. As the fisherman releases his fear of the situation, he gradually untangles the situation. It is a tale about healing and celebration of the challenges we must face to fully be alive and how our deepest fears can often lead to the biggest rewards. Delivered with an epic soundtrack it is captivating for adults and children alike. Great for families. Recommended age 7+

"CAPTIVATING, INTRIGUING
AND ENFRANCING"



Show specs

Running time

Approximately 25 minutes, can be performed twice per day.

Team

Cast of 3, touring party of 5

Performance space

The show is suitable for outdoor and indoor spaces, which can accommodate a free-standing aerial circus rig, or have a single weight-bearing rigging point (in the centre, with a height between 5 and 8 meters).

Set

The set consists of an aerial rig with two possible configurations:

- 7.5m height / 7 x 7m footprint, requiring 13 x 12m floor space to set up.
- 5 m height / 5 x 5m footprint, requiring 9 x 8m floor space to set up.

The aerial rig can be shared with other shows/companies.

Performance Area

Ideal: 9 x 9m, minimum 7 x 7 meter with the low rig.

Stage Surface

Dancefloor preferred, can be performed on dry grass, on stage decking, or other hard and flat surfaces.

Sound

Minimum sound requirement is an adequate PA to fill the venue/space. If required, a sound system can be provided by us, which can be fully battery powered (tbc).

Lighting

For outdoor daylight performances, no additional lighting is required.

Otherwise, an in-house technician is required to set up and cue a few simple lighting states. With lighting, the show is suitable for twilight and evening shows outdoors.

Audience Seating

We recommend that the organiser provides benches or chairs for some of the audience, to allow for a mid-level of audience (with people sitting on floor in front and standing behind). This also makes it accessible to disabled audience members or people unable to stand for the duration.

Dressing room and amenities

We require one dressing room with mirrors, running water and decent toilets.

Warm Up Area

The performers need a private, covered space big enough for warm-up.

Set-up and show preparation

3 hours to set up the rig and for a technical rehearsal. 15 minutes immediately before the performance for the preset.

Get-out

15 minutes immediately after the show to clear the stage, 1 hour to strike the aerial rig.

Crew Requirements

Festival/organiser to provide:

- 1 sound technician to set up sound system and sound-check. Cues are operated by the touring production manager during the show.
- 1 light technician for indoor and evening performances.
- 1 crew member to help with set-up and get out.
- 1 event staff to supervise set while performers get into costume/warm up.
- 2 stewards during performance times (15 min before to 15 min after show).

Other Requirements

Safe storage space for equipment and personal items.

Access to drinking water for performers and crew.

Inclement Weather

Due to performer health and safety, inclement weather may prevent the show going ahead. Le Physical will strive to perform whenever possible, but reserve the right to cancel after conversations with organisers.

Cost

The Sea Monster is available for approximately £1600. Le Physical is applying for touring support in order to be able to tour to venues with smaller budgets, the price of the show is negotiable depending on the venue/festival size, number of performances, and other funding sources.

Marketing

A marketing pack with show and company copy, hi-res images and a show trailer will be provided.

"WELL DONE -- WAS BLOWN AWAY ON EVERY LEVEL"



Contact

Artistic Director

Natalie Verhaegen
+44 (0) 7735 573 538
info@lephysical.co.uk

Partners and Supporters

The the Sea Monster is supported by Arts Council of Wales

Many thanks to The Ffwrnes, The Taliesin, People Speak Up, James Doyle-Roberts and Circus Eruption for their help, support and advice.

Credits

Simon Abel - Outdoor show photos
Pascal Haering - Indoor show photos
Guy Bellingham - Portrait of Aelfwyn Shipton
Dave Cooil - Portrait of Natalie Verhaegen

Quotes are from various audience members.

Please contact us for bookings, performing opportunities and in case of any other questions!

